

PART OF N.W. 1/4 OF SEC. 4, T.6 N., R.1 W. & S.W. 1/4 OF SEC. 33, T.7 N., R.1 W., S.L.B. & M.

131

GREEN ACRES ESTATES NO. 4

TAXING UNIT: 10

IN NORTH OGDEN CITY

PREFIX: 11-131

SCALE 1" = 60'

CURVE	A	L	R	LC
26	8°25'	62.33'	558.60'	62.30'
27	6°25'	66.03'	589.60'	
28	6°25'	69.73'	622.60'	69.69'
29	12°09'28"	44.56'	210'	44.48'
30	19°11'52"	80.31'	180'	60.02'
31	30°41'42"	80.36'	150'	79.40'
32	18°48'47"	98.17'	298.98'	97.73'
33	25°09'	118.07'	268.98'	117.12'
34	17°12'46"	71.79'	238.98'	71.52'
35	5°12'51"	42.14'	463'	42.12'
36	3°36'40"	27.10'	430'	27.10' S.22°56'40"E
37	1°43'07"	11.91'	397'	11.91'
38	13°42'30"	79.84'	333.72'	79.65'
39	2°58'	17.28'	333.72'	17.28'
40	22°21'	118.48'	303.72'	117.73'
41	15°25'32"	73.89'	273.72'	73.47'
42	19°22'08"	94.73'	280.23'	94.28'
43	22°36'	98.70'	250.23'	
44	17°56'	68.93'	220.23'	68.65'

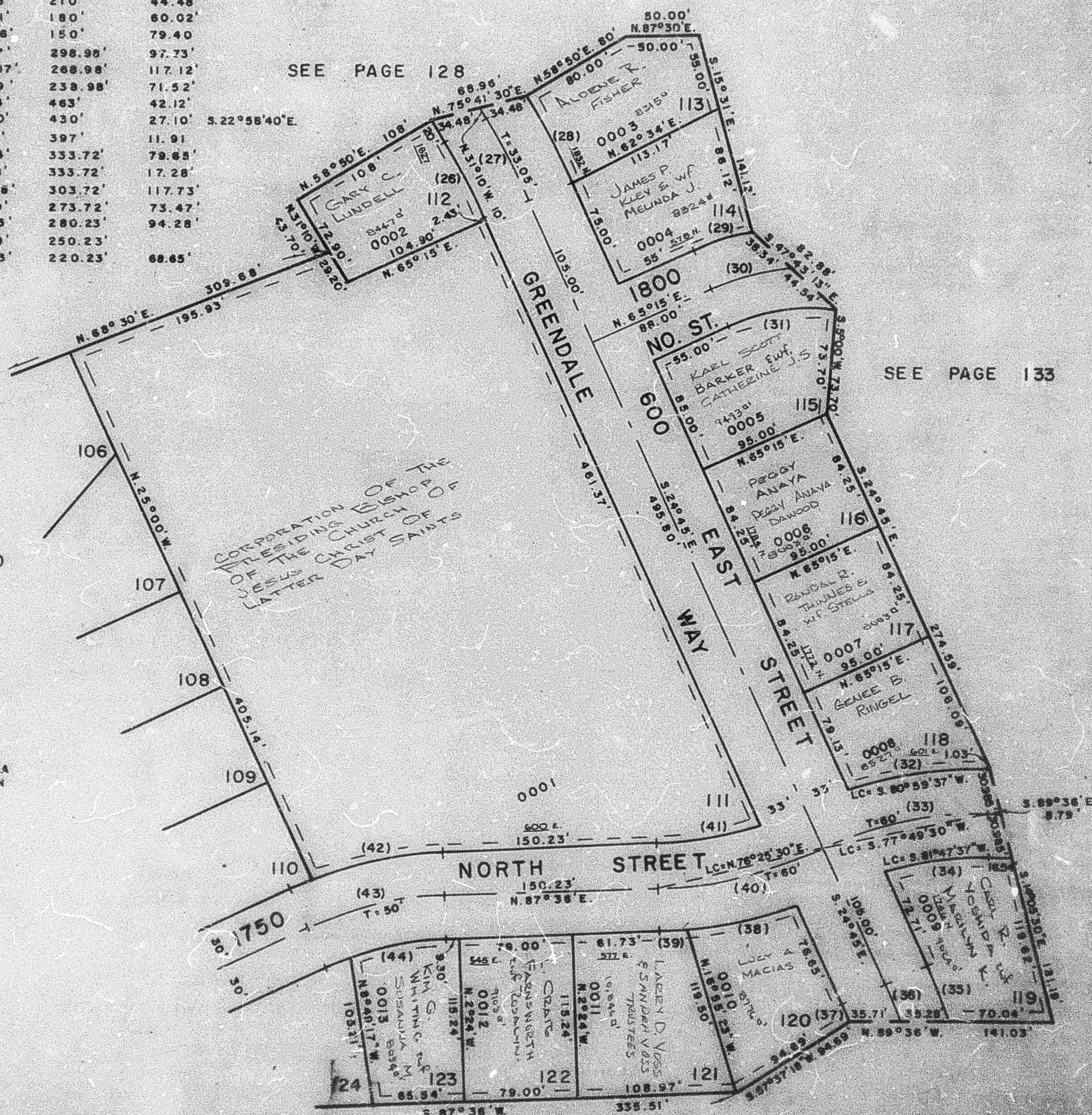
SEE PAGE 128

SEE PAGE 133

SEE PAGE 130

7' UTILITY & DRAINAGE
EASEMENT EACH SIDE OF
PROPERTY LINE AS
INDICATED BY DASHED
LINES

FOR COMPLETE ENG. DATA
SEE ORIG. DED. PLAT IN
BOOK 18, PAGE 34



SEE PAGE 4